



Thin@ Quick Start Guide V3.2

If you want to get Thin@ hands-on experience quickly, without going through the whole Documentation, this is a good place to start.

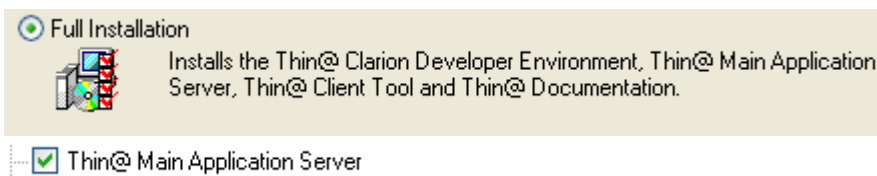
This does not mean that you don't have to read the Documentation – you do – it can give you in-depth knowledge of the system and how to use it.

However, these few pages contain the most important information to get you started quickly and it won't take more than *a few minutes of your time*.

Depending on the installation options that you've selected during installation, these are the three most common Scenarios:

- You performed a Full Installation – this is the most common option. Read [Section 1 and Section 2](#).
- You performed a Custom Installation and installed only Thin@ Server – read only [Section 1](#).
- You performed a Custom Installation and selected Thin@ Developer Environment – jump to [Section 2](#).

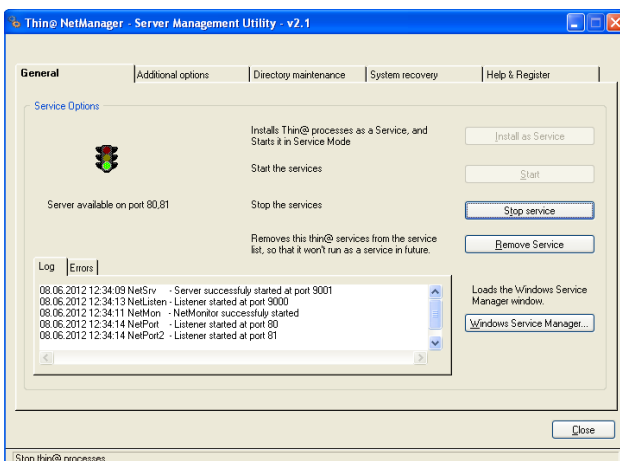
Section 1. You performed a Full Installation (or a Custom Installation and selected Thin@ Main Application Server): Configuring a Thin@ Server



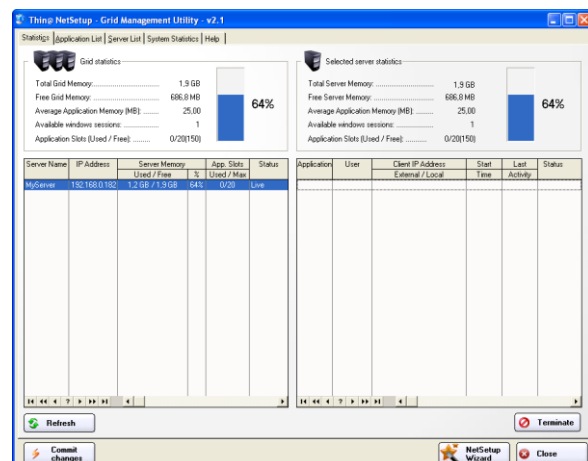
If you just finished with the Installer, these two applications should be running on your Desktop.

The first is *NetManager* and you use it to manage Thin@ Server Services and do other things related to your Thin@ Server.

The second is *NetSetup* and you use it to administer your whole Thin@ Server Grid. Yes, you still need *NetSetup* if you have only one Server. It is used to administer Servers, Applications, Users and User Licensing, and do other things related to your whole Thin@ Server Grid.



Thin@ NetManager – Server Management



Thin@ NetSetup – Server Grid Management


1.1 Quick System Check

Thin@ NetManager

If all went good during Installation, the Semaphore in NetManager should show a green



light and the message *Server available on port 80,81* (sometimes only port 81 if port 80 is already occupied).

Diagnostic tool  - using this tool you can determine that all the required parameters are properly configured. This includes windows security credentials, firewall and user access control (UAC) configuration.

Thin@ NetSetup

The status of your preconfigured Thin@ Server (*MyServer*) should be *Live*. (see image below).

Server Name	IP Address	Server Memory		App. Slots	Status
		Used / Free	%	Used / Max	
MyServer	192.168.0.	1,2 GB / 1,9 GB	65%	0/19	Live

What if your Semaphore is not *green* and your Server is not *Live*?

This means that the Wizard did not manage to automatically configure your Thin@ Server. Most likely there is something blocking the Thin@ Services (such as Antivirus or Firewall software) or there's a problem with provided Administrator credentials or it might be something else.

Check error messages in NetManager, it might help you solve the issue quickly. If it does not help, go through the Troubleshooter section in the [Thin@ Installation Instructions](#) or contact Thin@ Support.

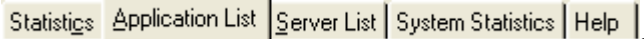
If your Semaphore is green and your Server is Live, this means that your Thin@ Server is configured and almost ready to use.

To test it, you need to have at least one application registered with the Server, appropriate User Licenses and then you can try to run a Thin@ Application.

1.2 Performing a simple Administration Task: Adding a Thin@ User License

The NetSetup application is a Thin@-enabled application (meaning that it is compiled with the Thin@ template) and is already registered with the Server.

You can see this if you go to the second tab in NetSetup



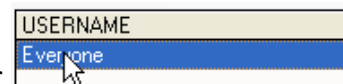
You will see a row like this

NetSetup	NetSetup administration utility	C:\Thin@\NetSetup.exe	0:30:00
----------	---------------------------------	-----------------------	---------

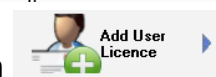
This means that the application NetSetup is registered with the Server.

However, nobody can connect to it because nobody has the right to do it. This is determined by User Licenses. In the following example you will enable everyone to access the NetSetup application remotely.

Thin@ has a predefined user for this purpose, it's the user



Select NetSetup, Select user Everyone and click on the button



A User License for user Everyone should be created.

LOGIN	FROM	TO	INST.
Everyone			(1) 1



Click  to confirm changes.

Remember

If you don't click Commit Changes before exiting NetSetup, some of the changes you made will be rolled back, so always remember to Commit Changes before exiting NetSetup.

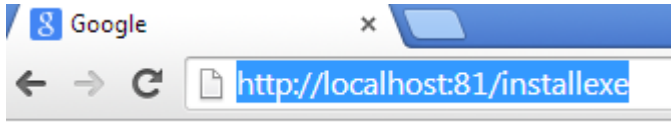
This is it. Now everyone can access the NetSetup application on your Server.

Hint

Using NetSetup should be easy and intuitive, although some users might find it difficult to adapt to the all-on-one-screen User Interface. To make things easier, there's a Wizard that you can use to perform the most frequent administrative tasks.



1.3 Running a Thin@ Application



Open Thin@ NetClient Utility. It's a Smart Client, used to run application on your Thin@ Server.

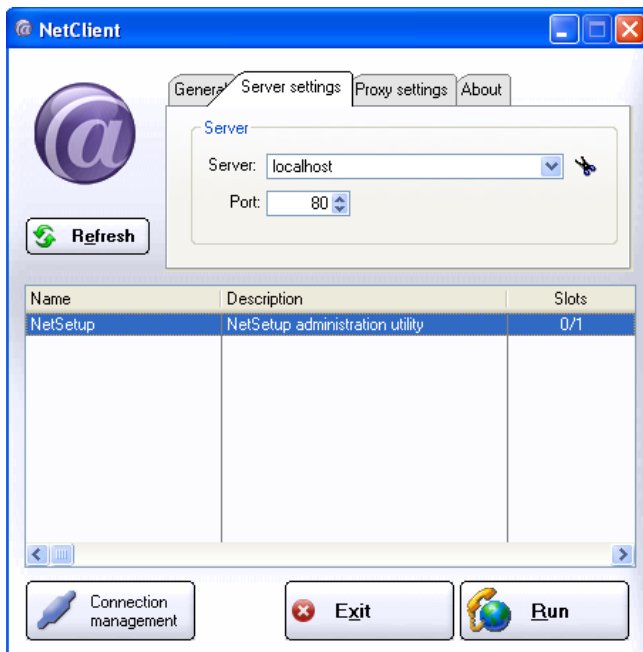
There is several different ways to start thin@ client.

<http://localhost:81/> - this will start java client inside a browser

<http://localhost:81/install> - this will install java client as a desktop application

<http://localhost:81/installexe> - this will install classic thin@ windows client

Open the NetClient and check Server settings. Since the same computer is both the Server and Client, you can put localhost instead of the Server IP. Use a 'green' port (from NetManager, by default ports 80 and 81).



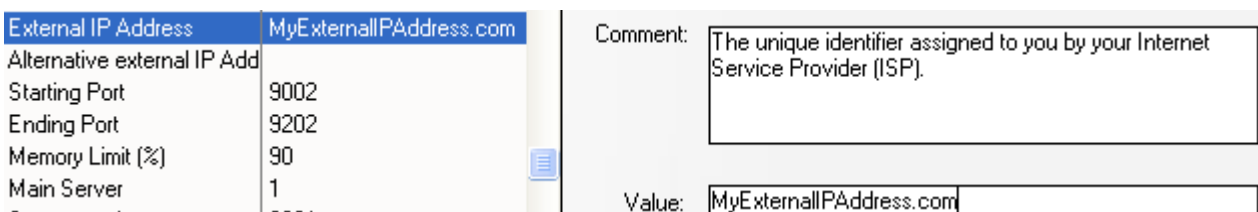
Hit Run and NetSetup should open as a *Thin@ Application*.

If you're in a LAN, try running the NetClient from another computer, use the Server IP address and run the NetSetup application remotely.

Q: What if I want to run it over the Internet?

If you want to run it over the Internet and you have more than one server in your server grid, this is how you do it:

Go to the **Server List** tab in NetSetup, and configure your External IP Address. Don't have one? Use a free service such as <http://dyn.com/dns/>, a paid service such as <http://www.no-ip.com/> or contact your ISP to purchase one.



After you enter your External IP, remember to commit changes.

Comment	Marko NET Server
Listener Port	9002
IP Address	192.168.0.41
Simple External Address	1
External IP Address	localhost
Alternative external IP Add	192.168.0.40,192.168.0.1,
Starting Port	9003

If you have only single server in your server grid the "simple external address" parameter will automatically configure your external server address.

Q: What if it does not work?

If it doesn't work and if you're getting various errors such as 10064, then it's likely that it's a router port forwarding and/or firewall and/or Windows UAC type of issue. Refer to the Troubleshooter section in the [Thin@ Installation Instructions](#) or contact Thin@ Support.

Section 2. You performed a Full Installation (or a Custom Installation and selected Thin@ Developer Environment): Making your own application Thin@-ready

You should install the Thin@ Developer Environment on your development machine, i.e. the same machine where Clarion is installed. For testing purposes, this can be the same computer as the Server, but in all other cases it should be a separate machine.

If you're a Clarion 7 or Clarion 8 user then you will see this new button on your IDE.



It's the Thin@ addin, and its main purpose is to quickly test if your application is running with Thin@ *without* putting it on your Server. It's called *Thin@-Quick-Test* or *Thin@-Local-Test* mode.

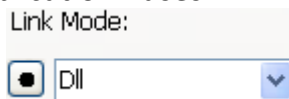
Remember

In order to test if your applications would work with Thin@ over the Internet you do not have to register them with the Server etc. After the application is made Thin@-ready, simply hit his button from your IDE and test if it works.

2.1 Making your application Thin@-ready

1. **Start with a simple Clarion application.** It's best to start with example applications shipped with Clarion such as School, Invoice etc., or pick one of your own simpler applications. Once you succeed in transitioning a simple application, it will be easier to do the same with a more complex application.
2. Open your Clarion application and **insert the ThiNet template** to the global extensions section.
3. *Make sure than **every menu item and every control** in your application has a **field equate label (USE variable)** defined* (this is the default, but if you upgraded your applications from a Clarion version older than C6.3, you might be missing them).

4. Make sure that your application uses **DLL Link Mode** (Called **Standalone**



(**C60RUNx.DLL**) in Clarion 6).

5. Make sure that you **don't use any unsupported 3rd party templates**. If you notice that a 3rd party template does not work with Thin@ please refer to the [3rd party section of the Thin@ Forums](#).

6. **Compile** your application and hit the  button.

Q: I use Clarion 6. How do I use this?

If you're using Clarion 6, you can still test if your application would work with Thin@ over the internet without *registering* it with the Server.

Please refer to *Chapter 4: Testing if your application works in Thin@-mode* in the [Thin@ Installation Instructions](#).

Q: My application is Thin@-ready and it works in Thin@-Local-Test mode. How do I access it over the Internet?

You need to register it with the Thin@ Server in the same way as you did with the NetSetup application in the previous Scenario. You can use the NetSetup Wizard to register the application.

Once your application is registered, you should be able to access it over the Internet.

Q: My application does not work over the Internet or there are issues with it

Make sure that you copy the file **ThinN@.dll** to your application folder (also check if the files **7z.exe** and **RisNet.dll** are in your application folder - if they are not copy them).

Also remember to put all application graphics – images, icons – in the root of your application folder. There are ways to use other folders, refer to the [Thin@ Programmers Guide](#) for more info.